



Superior Chlorine Resistant Elastic Fiber


beachwear

2018

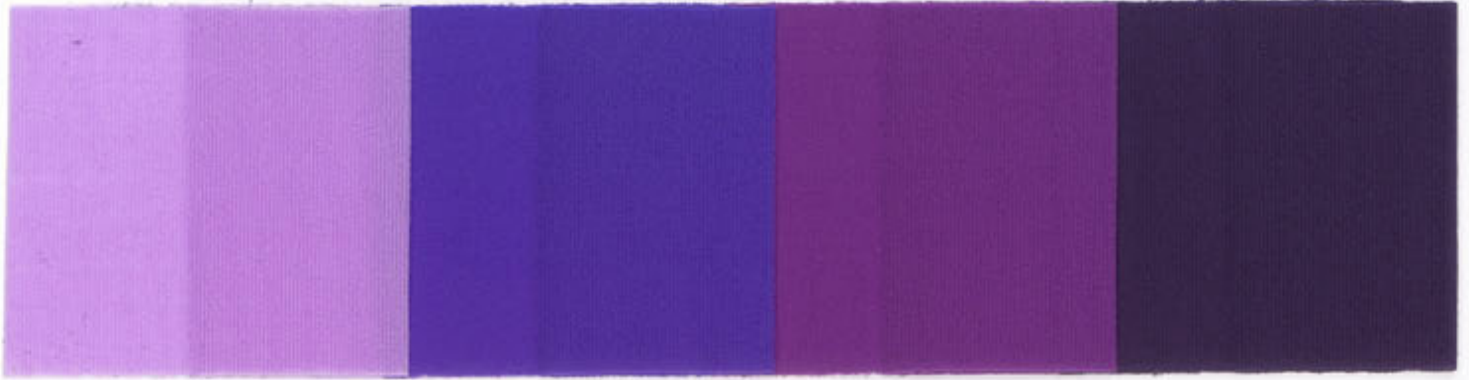
Viola

82% PA - 18% EA
90 g/m² - 140 cm



Now you can buy our fabrics
on the website with a click 

Active Colors

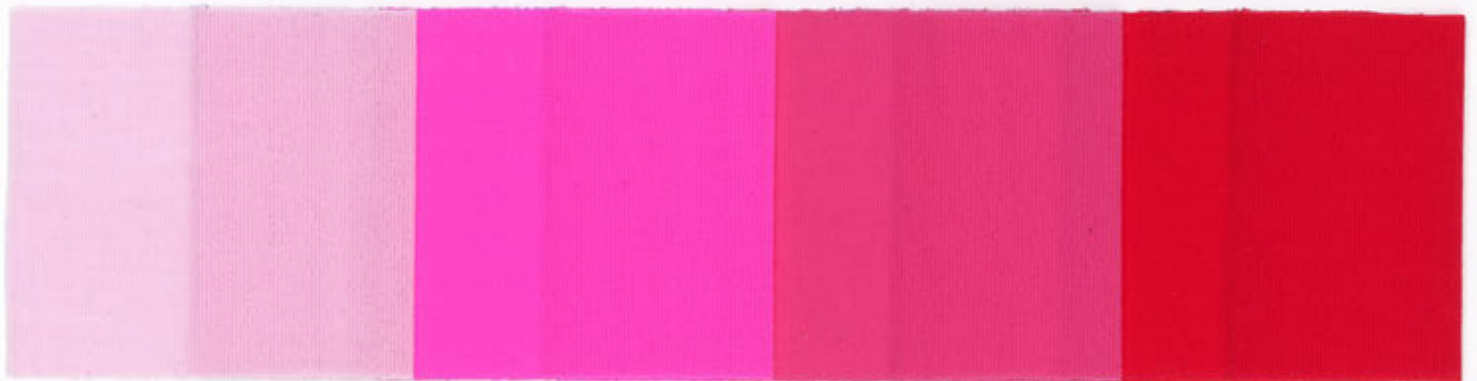


09 - GLICINE

40 - LAVANDA

M 103 - IRIDE

S 099 - BLACKBERRY

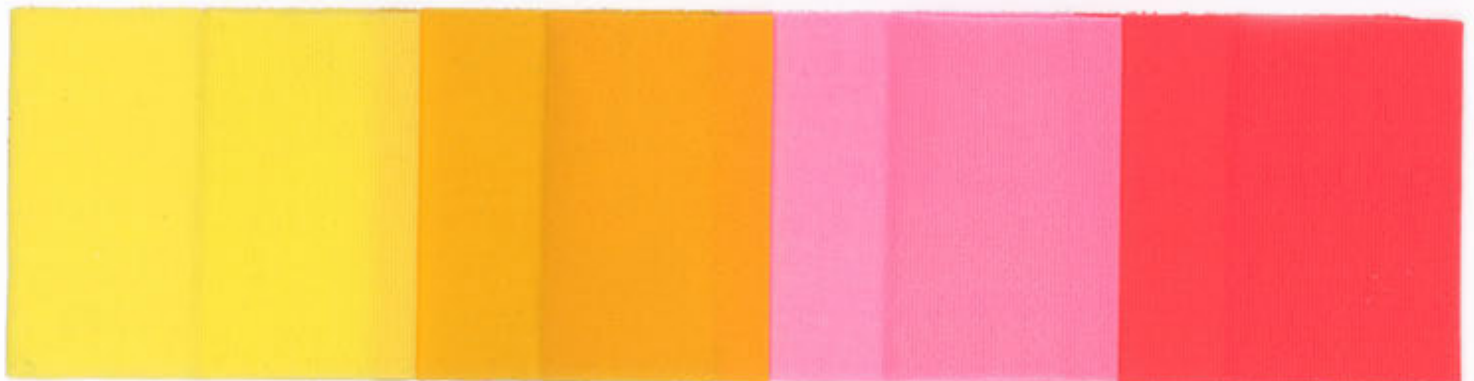


C 167 - LILAC

M 155 - WILD PINK*

M 338 - JACK FLASH

13 - ROSSO

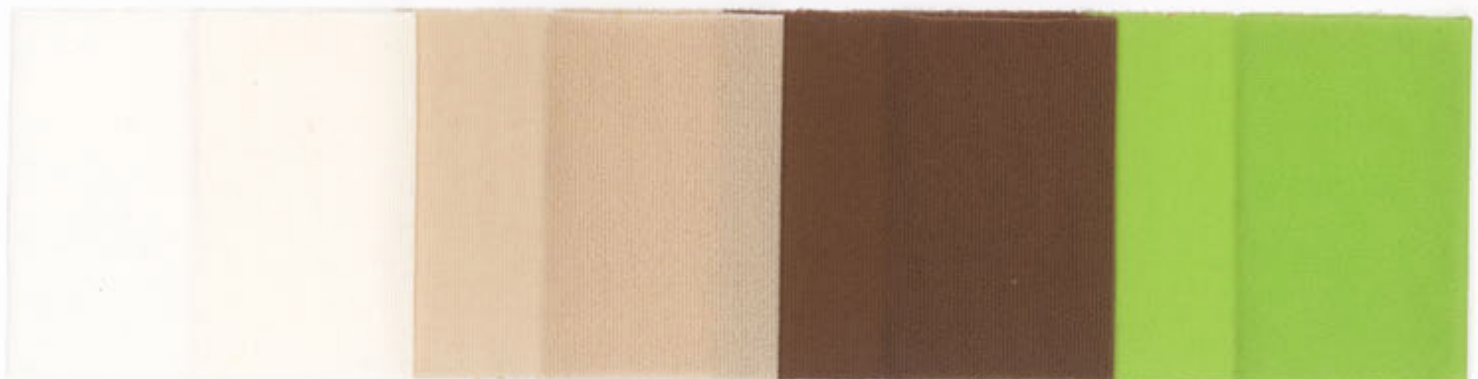


M 160 - LEVANTE

S 083 - ZAFFERANO

C 199 - SUNSET*

X 049 - BYA



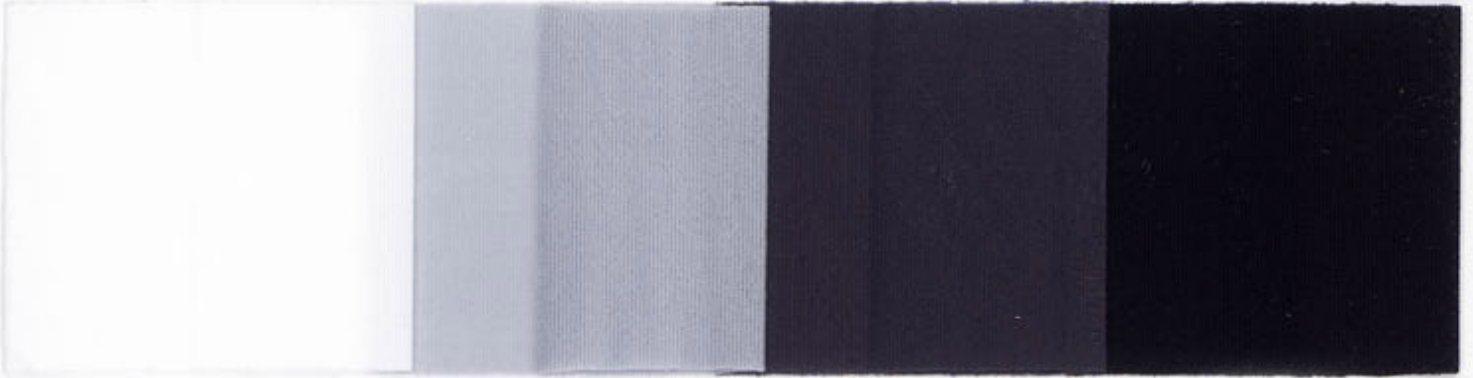
03 - PANNA

C 506 - SKINNY

S 313 - ATHENA

M 228 - CLOROFILLA

Spiritual Reform

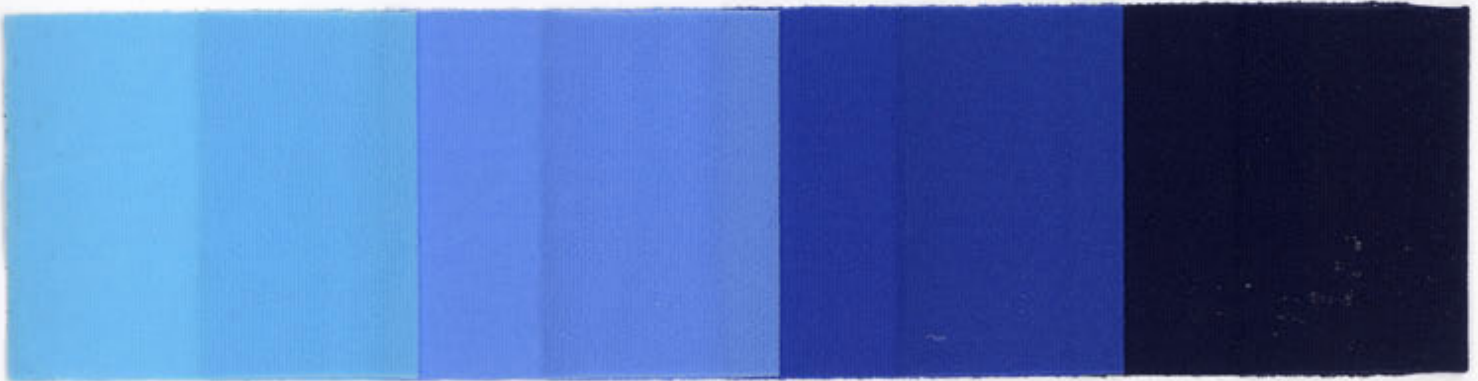


01 - BIANCO

C 416 - PERLATO

37 - CAMINO

X 54 - NERO



C 041 - PRINCE

M 245 - FROZEN

468 - PRUSSIA

186 - MARIANNE



M 084 - PAGODA BLUE

S 506 - SKY HOUSE

M 219 - TOURMALINE

Colore / Colour	N°	Luce Light ISO 105 B02		Stregamento Crocking Secco Dry Umido Wet ISO 105 X12		Lavaggio 40°C - A15 Washing 40°C - A15 ISO 105 C06		Acqua Severa Water Staining ISO 105 E01		Acqua di Mare Sea Water ISO 105 E02		Sudore Acido Acid perspiration ISO 105 E04		Sudore Basico Alkaline perspiration ISO 105 E04		Acqua di piscina Chlorinated water 20 (ma/l) 50 (ma/l) 100 (ma/l) ISO 105 E03		
		C.C.	S.CO	S.CO	S.PA	S.CO	S.PA	S.CO	S.PA	S.CO	S.PA	S.CO	S.PA	S.CO	C.C.	C.C.	C.C.	
ATHENA	S 313	4	4/5	4	4	4	4/5	4	4/5	4	4/5	4	4/5	4	4/5	4	2/3	1/2
BIANCO	01	3/4	5	5	5	5	5	5	5	5	5	5	5	5	5	4	3	2/3
BLACKBERRY	S 099	4/5	4/5	4/5	4/5	4/5	4/5	4	4	4	4	4	4	4	4	4	3	1
BYA	X 049	3	4/5	4/5	4/5	4/5	4/5	4/5	4/5	4/5	4/5	4/5	4/5	4/5	4/5	4	1/2	1
CAMINO	37	5	4/5	4/5	4/5	4/5	4/5	4/5	4/5	4/5	4/5	4/5	4/5	4/5	4/5	4/5	3	2
CLOROFILLA	M 228	3	4/5	4/5	4/5	4/5	4/5	4/5	4/5	4/5	4/5	4/5	4/5	4/5	4/5	4/5	3	2
FROZEN	M 245	1/2	4/5	4/5	4/5	4/5	4/5	4	4/5	4/5	4/5	4/5	4/5	4	4/5	3/4	1/2	1
GLICINE	09	5	4/5	4/5	4/5	4/5	4/5	4/5	4/5	4/5	4/5	4/5	4/5	4/5	4/5	3	1/2	1
IRIDE	M 103	2/3	4/5	4	4/5	4/5	4/5	4/5	4/5	4/5	4/5	4/5	4/5	4/5	4/5	4	3	1/2
JACK FLASH	M 338	3/4	4/5	4/5	4/5	4/5	4/5	4/5	4/5	4/5	4/5	4/5	4/5	4/5	4/5	4/5	4	3/4
LAVANDA	40	5	4/5	4/5	4/5	4/5	4/5	4	4/5	4/5	4/5	4/5	4	4/5	4	2/3	2	
LEVANTE	M 160	5	4/5	4/5	4/5	4/5	4/5	4/5	4/5	4/5	4/5	4/5	4/5	4/5	4/5	4/5	3/4	2
LILAC	C 167	3/4	5	5	5	5	5	5	5	5	5	5	5	5	5	4/5	4	3
MARIANNE	186	5	4	4	4	4/5	4	4/5	4	4/5	4	4/5	4	4/5	4	4/5	3/4	3
NERO	X 54	5	4/5	4/5	4	4/5	4	4/5	4/5	4/5	4/5	4/5	4/5	4	4/5	4/5	4	3/4
PAGODA BLUE	M 084	2	4/5	4/5	4/5	4/5	4/5	4/5	4/5	4/5	4/5	4/5	4/5	4/5	4/5	4	3	2
PANNA	03	5	5	5	5	5	5	5	5	5	5	5	5	5	5	4	3/4	2/3
PERLATO	C 416	5	4/5	4/5	4/5	5	4/5	4/5	4/5	5	4/5	5	4/5	4/5	4	2/3	1	
PRINCE	C 041	2/3	4/5	4/5	4/5	4/5	4/5	4/5	4/5	4/5	4/5	4/5	4/5	4/5	4/5	3/4	2/3	1
PRUSSIA	468	5	4/5	4/5	4/5	4/5	4	4/5	4/5	4/5	4/5	4/5	4/5	4	4/5	4/5	2/3	2
ROSSO	13	5	4/5	4/5	4	4/5	4	4/5	4	4/5	4/5	4/5	4	4/5	4	3/4	2/3	
SKINNY	C 506	5	5	5	5	5	4/5	4/5	4/5	4/5	4/5	4/5	4/5	4/5	4	3	2	
SKYHOUSE	S 056	2/3	4/5	4/5	4/5	4/5	4/5	4/5	4/5	4/5	4/5	4/5	4/5	4/5	4/5	4	2	1/2
SUNSET*	C 199	2	4/5	4/5	4/5	4/5	4/5	4/5	4/5	4/5	4/5	4/5	4/5	4/5	4	2	1	
TOURMALINE	M 219	3	4/5	4/5	4/5	4/5	4	4/5	4	4/5	4	4/5	4	4/5	4/5	3	1/2	
WILD PINK*	M 155	2/3	4/5	4/5	4	4/5	4	4/5	4	4	4	4/5	4	4/5	4	2	1	
ZAFFERANO	S 083	5	4/5	4/5	4/5	4/5	4	4/5	4	4/5	4	4/5	4	4/5	4/5	4	3	

Luce Light	Valutazioni Assessments	Altri Test Other Tests	Valutazioni Assessments
1	debolissima very weak	1	debole weak
2	debole weak	2	scarsa limited
3	moderata moderate	3	abbastanza buona fair
4	abbastanza buona fair	4	buona good
5	buona good	5	ottima excellent
6	buonissima very good	* Colori Fluorescenti / * Fluor Colors	
7	ottima excellent	C.C. = Cambio Colore / Colour discoloration	
8	eccezionale exceptional	S.CO = Stingimento su Cotone / Staining on Cotton	
		S.PA = Stingimento su Poliammide / Staining on Polyamide	

Raccomandiamo la massima attenzione
 nella lettura dei valori di solidità.
 Sconsigliamo abbinamenti/intarsi tra colori che abbiano valori di solidità al lavaggio, acqua o acqua di mare inferiori a 4/5.
 In caso di necessità di abbinamento/intarsio consigliamo sempre una prova preventiva.

Please pay special attention
 to the fastness values declared on the colour card.
 Combination of colours is not recommended when the fastness values of washing, water or sea water are lower than 4/5.
 In case of combination we suggest a trial before.



Headquarters

SITIP S.p.A. INDUSTRIE TESSILI - 24020 Cene (BG) Italy - Tel +39 035 736511 - Fax +39 035 719003 - info@sitip.it

www.sitip.it